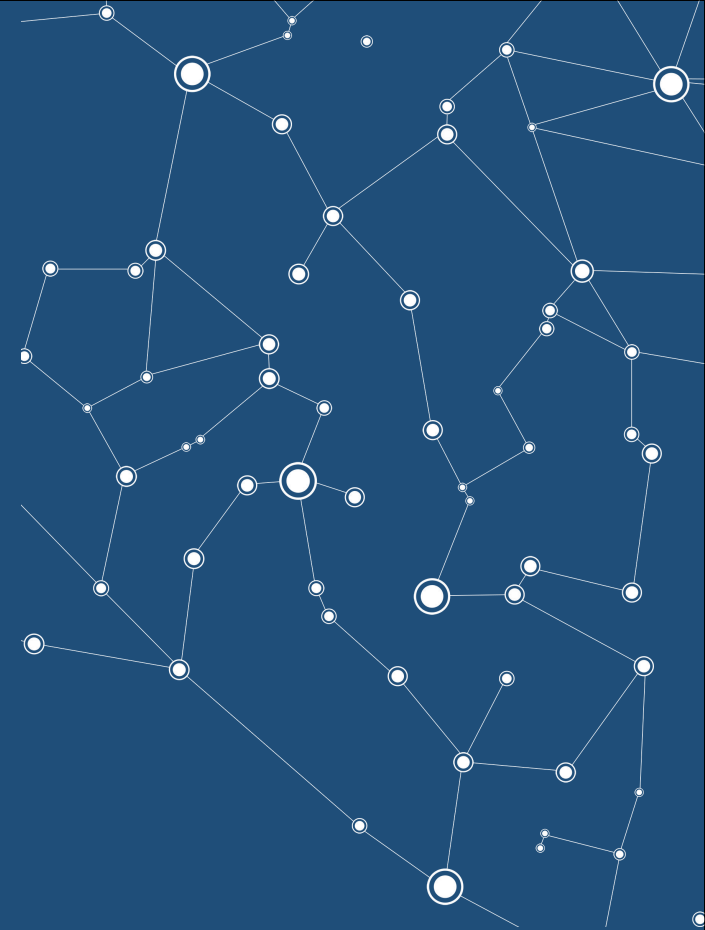
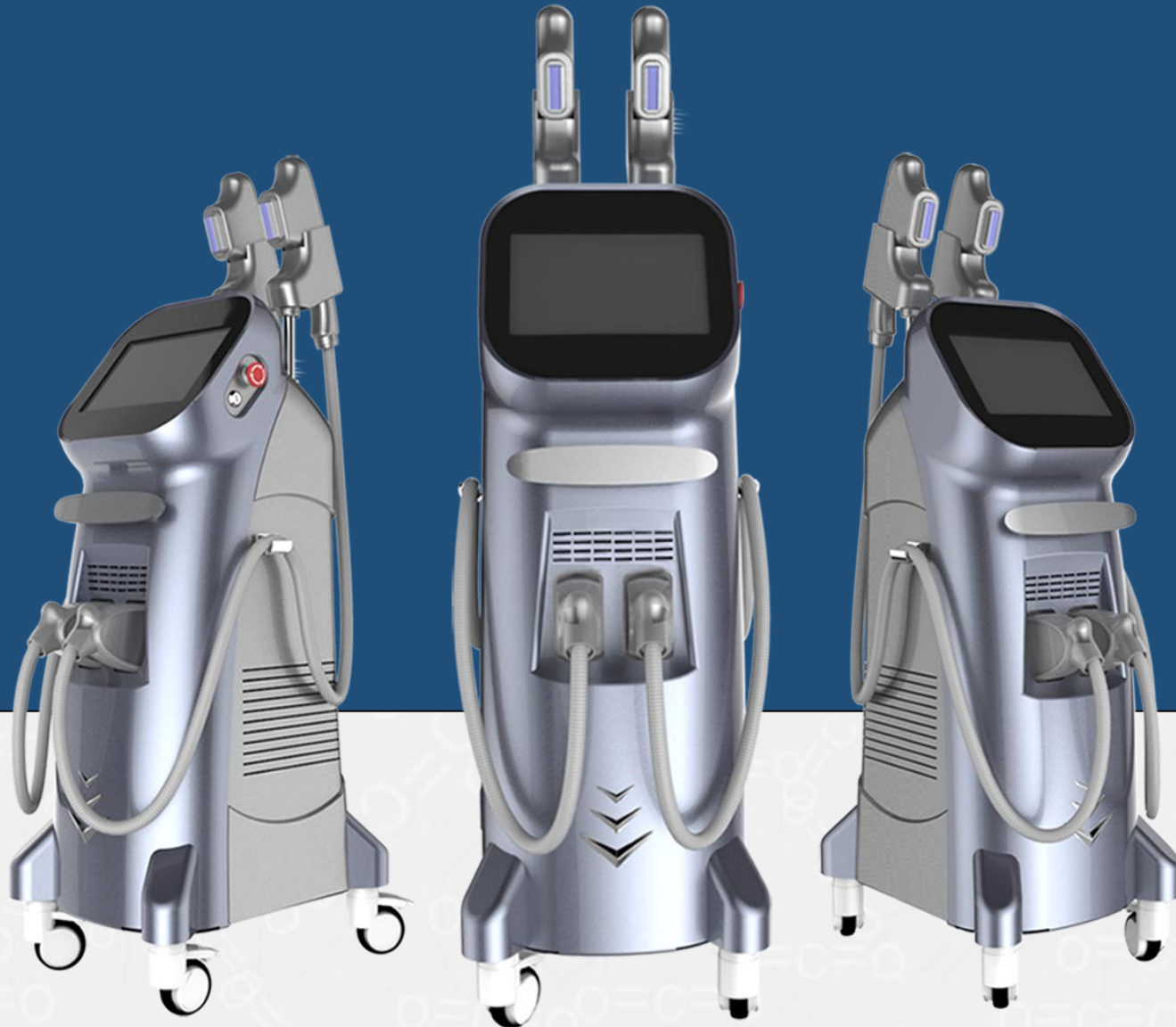


MONA ONE

IPL + E-Light+SHR SHR-950B Hair Removal System



Beijing sano BeautyS & T Co.,Ltd

Introduction of
SHR-950B



1

SR Headpiece



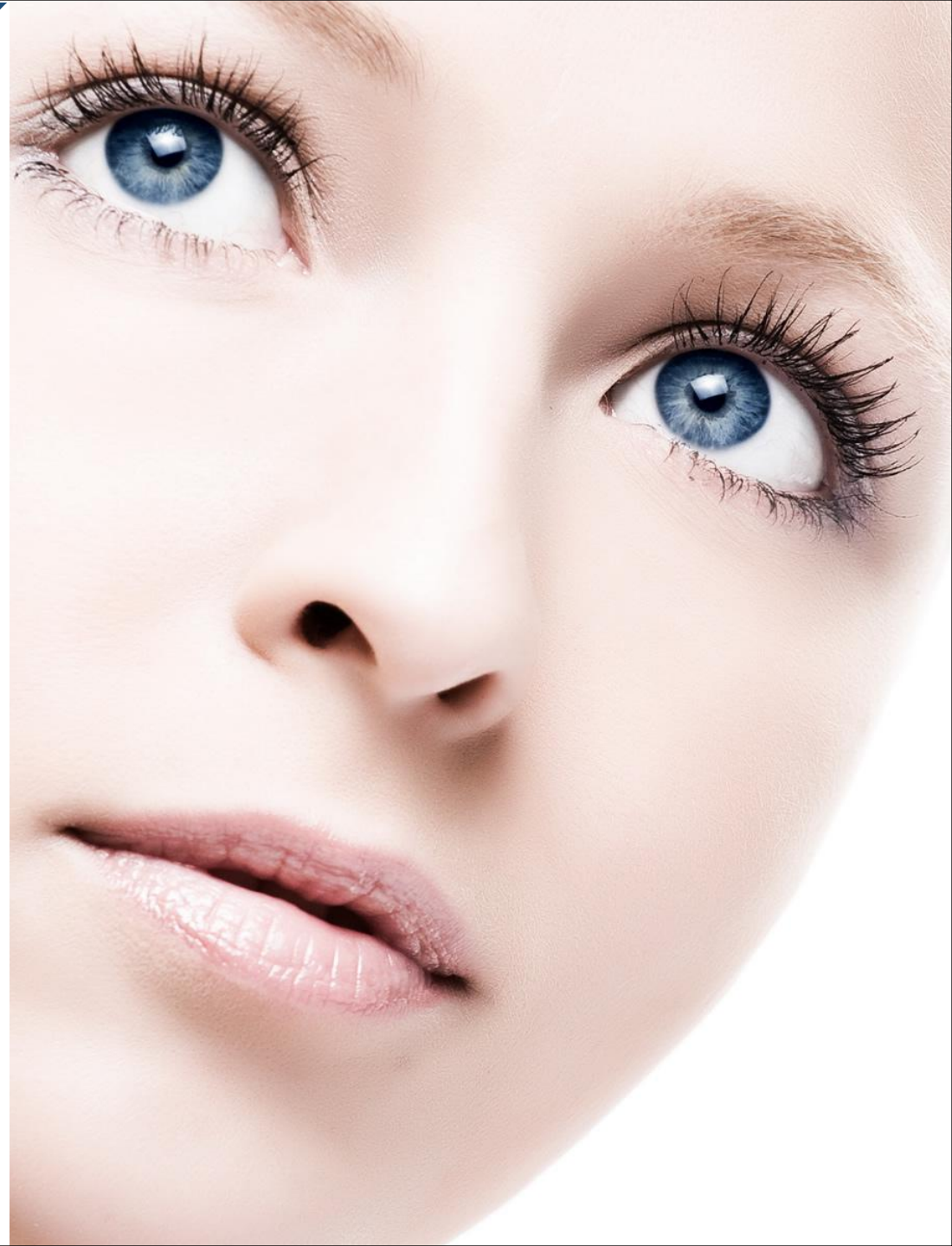
2

HR Headpiece



3

Handle plug seat



1

Lasting Hair Removal

the unwanted hair under arms, legs, lips, or other body parts.

2

Skin Rejuvenation

shrink pores, tighten skin, improve skin elasticity and glossiness.

3

Pigmentation Removal

removes various kinds of pigment such as freckles, chloasma, age spots, sunburn, etc.

4

Acne Clearance

Specifications

Laser source: SHR-950B Hair Removal System

Wave length:	HR: 650-950nm
Wave length:	Optional:(SR: 560-950nm VR 420-950nm PR: 530-950nm AR:500-950nm)
Fluence :	
Frequency:	IPL&E-light: 10-50J/cm ² SHR: 1-10J/cm ²
RF power:	IPL&E-light: ≤0.5HZ SHR: 1-8HZ SHR&SSR:1-2HZ
Input Power:	30W
Power source:	3000W
Lamp:	pure sapphire
Spot Size:	imported lamp
Contact cooling temperature:	10*40mm for(SR,VR,AR,PR) 15*50mm for HR
Cooling system :	Max -10°C
LCD screen:	Built in water cooling +semi conductor cooling +air cooling
Weight:	10.4 inch true color touch screen control
Machine size:	30KG
Package size:	345mm×520mm×1090mm 570mm×660mm×1200mm

SHR-950B Working Theory

- 1 SHR-950B is a revolutionary technology for IPL Hair removal treatment. The traditional IPL treat your skin with high amounts of Joules (energy), SHR-690 shots multiple shots but at low amounts of Joules.
- 2 SHR mode gently heats the hair follicles. Clients feel only warmth and a slight tingling sensation, some even comparing it to a light massage.
- 3 The system also utilizes In-Motion technology, where the hand piece is always in motion over the skin.



SPECTRA+ IDPL

Intense Dynamic Pulse Light System

CETARON
WHERE TECHNOLOGY MEETS BEAUTY

START

MAIN MENU

SPECTRA+ IDPL

IPL

Intense Pulse Light

E-LIGHT

HR

SR

SDR

Super Dynamic
Rejuvenation System

Back

Next

IPL Mode

Handle Type

HR

Hair Removal

Skin Type

1 Fair

2

4

5

Pigmentation

None

Light

Medium Heavy

Heavy

Hair Type

Small

Medium

Large

Back

Next

IPL Mode

SPECTRA+ IDPL

Handle Type

HR

Hair Removal

Skin Type

1 Fair

2

3

Pigmentation

None

Light

Medium

Small

Medium

Large

Next

E-Light Mode

SPECTRA+ IDPL

AR

Acne
Removal

Handle Type: SR

Counter

Sum

Energy

J/cm²

W

Parameters

○ 1st Pulse Duration

○ 2nd Pulse Duration

○ 3rd Pulse Duration

○ Pulse Delay

Frequency

Standby

Back

SDR System

SPECTRA+ IDPL

Super Dynamic
Rejuvenation

Handle Type: SR

Counter

Sum

Energy

J/cm²

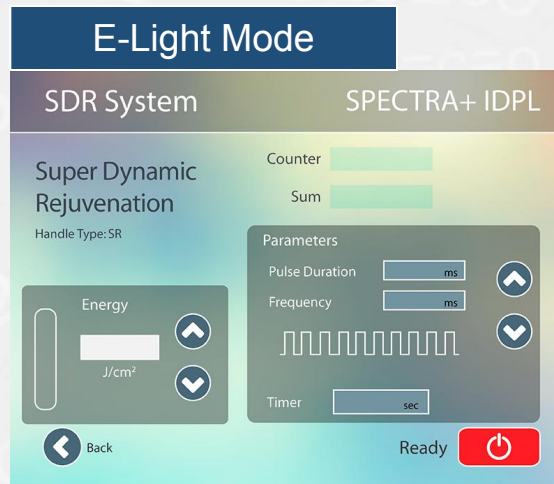
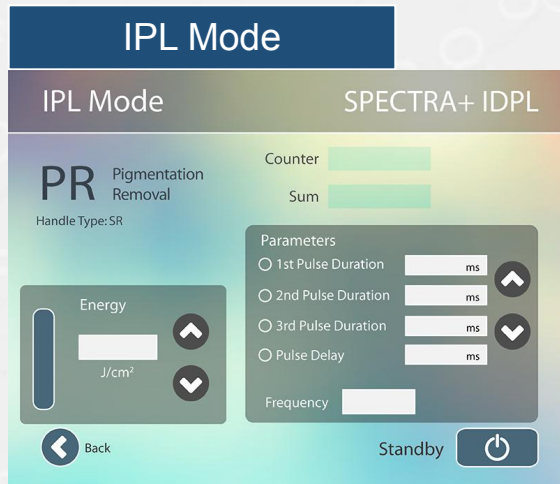
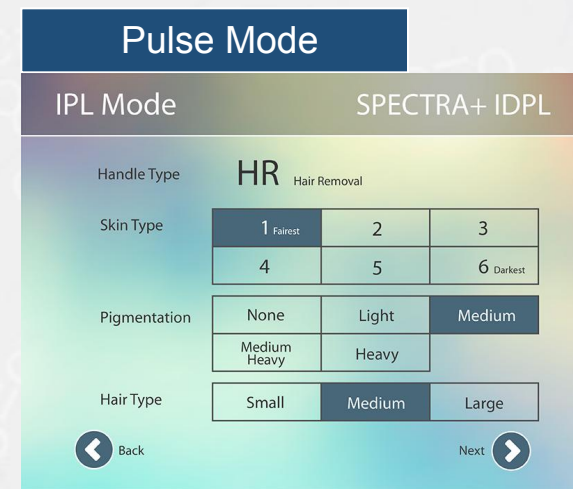
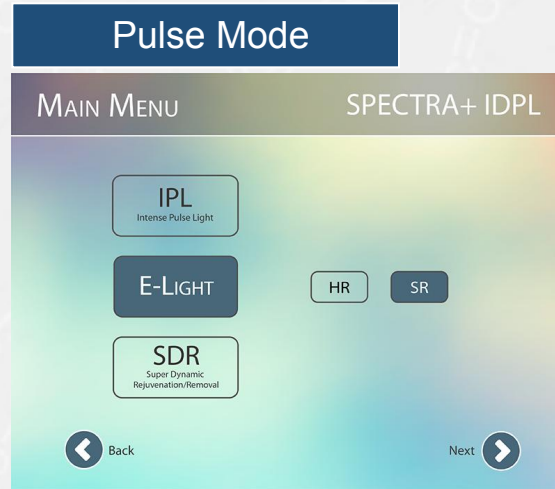
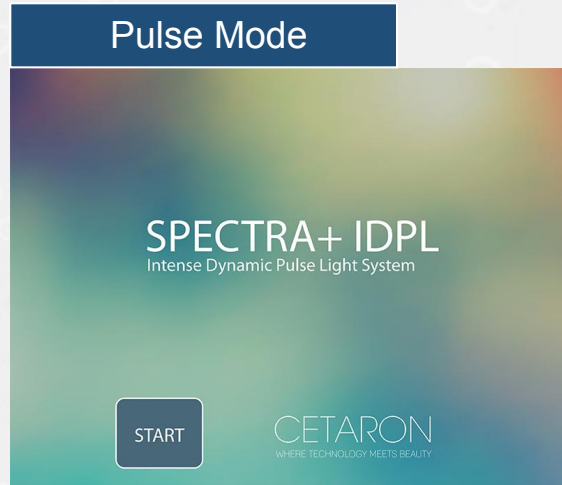
Parameters

Pulse Duration

Frequency



Complete SHR-950B System



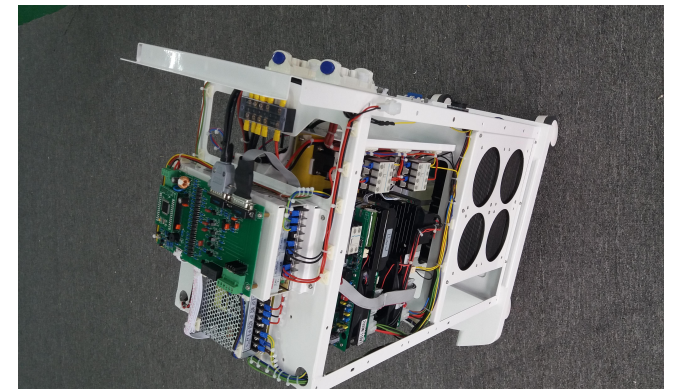
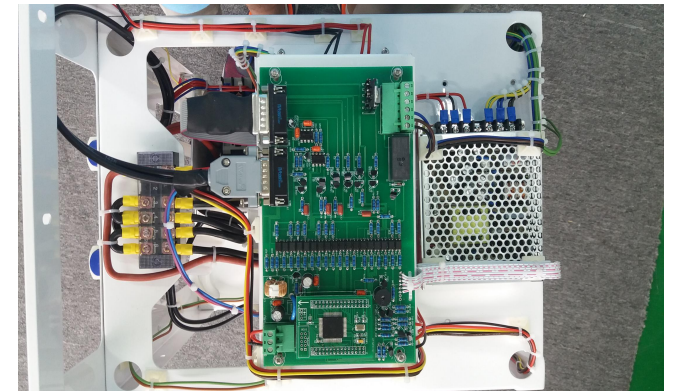
System Advantages and Feature

- 1 The system combines diode laser hair removal working modes includes SHR working mode to deliver multiple shots but at low amounts of energy, to achieve practically painless results.
- 2 The system combined with “In Motion” represents a breakthrough in permanent hair removal with light technology. The treatment is more pleasant than with conventional systems and skin is better protected
- 3 The system is suitable for all skin types, even tanners; Unlike traditional Laser and IPL, SHR can be had all year round without having to hide from the sun.
- 4 The system utilizes an imported flash lamp with a 300,000 shot life span.



System Advantages and Feature

- 5 The wavelength of 650-950nm for Hair removal and 560-950nm for skin rejuvenation are utilized, specially made crystal filters both violet light and infrared light which can radiate and absorb large volumes of water from the skin.
- 6 SHR-950B is equipped with water temperature, water level, and water flow sensors to ensure safe operation. It will automatically stop the machine if there is any potential problem.
- 7 SHR 950B is a single pulse IPL machine. Only 4-5 treatments are needed, during which clients feel no pain.



Difference	Traditional	SHR 950B	Advantage
Wavelength	650-1200nm (HR) 560-1200nm (SR)	650-950nm(HR) 560-950nm(SR)	SHR-950B filters both violet light and infrared light which can radiate and absorb large volumes of water from the skin.
Auto identified hand piece	Unavailable	Available	Identified hand piece, HR &SR. The system can enter into correct operation menu directly when you insert the hand piece. Identified function makes the operation simple and treatment safe.
Frequency	0.3-1Hz	1-8Hz	Which speeds up the operation and reduces treatment time.
Work mode	Stationary mode	Stationary mode & Moving mode	Compared with traditional IPL treatment, only 1/8 as much time is needed for treatment of arms, legs, and back.
Water circuit monitor	Unavailable	Available	Water temperature, water level, and water flow sensors ensure the hand piece will not burn patients.
Stain resistant water circle	Unavailable	Available	Stain resistant water circuit system makes sure no components rust, keeping the crystal and filters clean and ensuring the equipment has a long lifespan.
Water lock connector	Unavailable	Available	Treatment head connector with water-lock for safe and easy changing, even with only single treatment head use is allowed.

Before and After Treatment





Established in 2005, Beijing sano Beauty S & T Co., Ltd takes the leading in applying advanced laser and Intense light technology in medical and beauty industry.

Now we developed Mona IPL series, E-light, Co2 fractional laser, 808nm diode laser, ultrasonic cavitations, fractional RF and hair re-growth laser.

With efficient R & D team, mass production ability and reliable quality control system, Beijing Sanhe Beauty supplies the OEM & ODM service and help our clients build up their own reputation and more competitive in the market.

All the process of the producing is under ISO13485 Quality system and match with CE certification request.

Beijing Sanhe Beauty will work hard constantly for supplying best product and after sale service.

Real Picture of Beijing Sanhe Beauty S & T Co.,Ltd

THANKS

Welcome to consult more!

Address: 2rd floor, Building No.7, Maohuagongchang, Nancaizhen, Shunyi District,
Whatsapp: 008618813196949
Email: sunny@sanhebeauty.net

